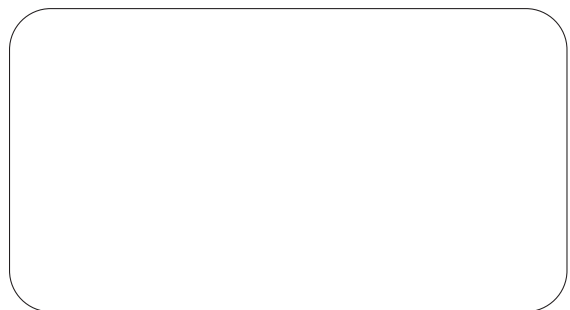


GRANDSTONE®



GRANDSTONE®



2014-2015
Tyre Catalogue

GRANDSTONE TYRE CORPORATION LIMITED.

Add: Room 1117, Business Building A, Wanda Plaza
No.37 Lianyungang Road, Qingdao, China.
Tel: 0086 532 80916215 Fax: 0086 532 80916210
info@grandstonetyre.com www.grandstonetyre.com





INTRODUCTION

Grandstone Tyre Corporation Limited is a professional and reputable tyre supplier, founded in Qingdao, China since 2001. Grandstone specializes in designing, manufacturing, exporting and after sale service.

Grandstone supplies full range of tyres including TBR, TBB, LTR, PCR, SUV, UHP, OTR, AGRI, INDUSTRIAL tyres and inner tubes. Grandstone has 10 OEM manufactures including 4 all-steel radial tyre manufactures, 2 semi-steel radial tyre manufactures, 3 nylon bias OTR, agricultural, industrial tyre manufactures, 2 natural and butyl rubber inner tubes manufactures. Grandstone promises shipment timely and exactly.

Grandstone has obtained the certificates of ISO/TS16949, CCC, DOT, ECE, GCC, SONCAP, etc. Main brand GRANDSTONE and JUMBO have been exporting to more than 80 countries and regions. With the advanced equipments, technology, strict quality-control system and quality guarantee, we are proud of our brands.

With the company's spirit of honesty, responsibility and innovation, Grandstone dedicates itself to growing up and creating value with the partners together.

CERTIFIED BY



CONTENT

TBR	TRUCK AND BUS RADIAL TYRE	01
PCR	PASSENGER CAR RADIAL TYRE	13
AGR	AGRICULTURAL TYRE	25
OTR	OFF-THE-ROAD TYRE	26
IND	INDUSTRIAL TYRE	27

FACILITIES





PATTERN CHARACTERISTICS



- Suitable for all normal roads
- High speed capability
- Rib pattern

GT 168

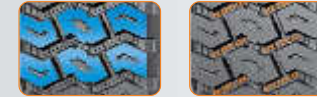


Size	Ply Rating	Tread Depth (mm)	Speed Rating	Standard Rim	Load Index	Max. Load (kgs)		Inflation Pressure (kpa)	New Tyre Inflated Dimension (mm)	
						Single	Double		Overall Diameter	Section Width
7.00R16	14	12	L	5.50F	118/114	1320	1180	750	775	200
7.50R16	14	12	K	6.00G	122/118	1500	1320	770	805	215
7.50R16	16	12	L	6.00G	122/118	1500	1320	770	805	215
8.25R16	16	13	L	6.50H	139/137	1800	1600	770	855	235
8.25R20	16	15	K	6.50	139/137	2430	2300	930	974	236
9.00R20	16	15.5	K	7.00	144/142	2800	2650	900	1018	259
10.00R20	18	16	K	7.50	149/146	3250	3000	930	1055	278
11.00R20	18	17	K	8.00	152/149	3550	3250	930	1085	293
12.00R20	18	17	K	8.50	154/151	3750	3450	830	1125	315
12.00R24	20	15	K	8.50	160/157	4500	4125	900	1226	313
11R22.5	16	15	M	8.25	146/143	3000	2725	830	1047	273
12R22.5	18	16	M	9.00	152/149	3550	3250	930	1083	292.1
315/80R22.5	18	15/17	M	9.00	154/151	3750	3450	830	1076	312
315/80R22.5	20	15/17	M	9.00	156/150	4000	3450	850	1076	312
13R22.5	18	15	L	9.75	154/151	3750	3450	830	1124	320
13R22.5	20	15	L	9.75	156/150	4000	3450	850	1124	320



NEW

PATTERN CHARACTERISTICS



- Unique tread belt structure, tyre tread and wing compound with high wear-resistance and low heat generation
- Especially fit for the requirements of special service condition.

GT 288



Size	Ply Rating	Tread Depth (mm)	Speed Rating	Standard Rim	Load Index	Max. Load (kgs)		Inflation Pressure (kpa)	New Tyre Inflated Dimension (mm)	
						Single	Double		Overall Diameter	Section Width
12.00R24	20	21	K	8.50	160/157	4500	4125	900	1225	316



PATTERN CHARACTERISTICS



- Suitable for highway and normal road
- For all bus application and steer tyre for truck

GT 166



Size	Ply Rating	Tread Depth (mm)	Speed Rating	Standard Rim	Load Index	Max. Load (kgs)		Inflation Pressure (kpa)	New Tyre Inflated Dimension (mm)	
						Single	Double		Overall Diameter	Section Width
11R22.5	16	15	M	8.25	148/145	3150	2900	840	1054	279
11R24.5	16	15	M	8.25	149/146	3250	3000	830	1104	279
12R22.5	18	15.5	L	9.00	152/148	3550	3150	840	1085	300
205/75R17.5	10	11.5	M	6.00	122/120	1500	1400	675	753	205
215/75R17.5	16	13	M	6.00	127/124	1750	1600	830	765	215
235/75R17.5	16	13	M	6.75	132/129	2000	1850	830	795	235
295/75R22.5	16	15	M	9.00	146/143	3000	2725	830	1014	298
295/80R22.5	16	16	L	9.00	150/147	3350	3075	830	1044	298
315/80R22.5	18	15/17	M	9.00	154/151	3750	3450	830	1076	312
315/80R22.5	20	15/17	M	9.00	156/151	4000	3450	850	1076	312



PATTERN CHARACTERISTICS



- Suitable for all wheels of truck and bus for all kinds of road condition.
- Excellent anti-irregular-wear performance, higher original mileage.
- New formulation designed, low heat build up, good tear resistance and puncture resistance.

GT 258



Size	Ply Rating	Tread Depth (mm)	Speed Rating	Standard Rim	Load Index	Max. Load (kgs)		Inflation Pressure (kpa)	New Tyre Inflated Dimension (mm)	
						Single	Double		Overall Diameter	Section Width
						315/80R22.5	20		18	L
13R22.5	18	20	G	9.75	154/151	3750	3450	830	1124	320
13R22.5	20	20	G	9.75	156/150	4000	3350	875	1124	320



PATTERN CHARACTERISTICS



- Rib Pattern, extra sideslip resistance, pitch pattern designed.
- Low Noise, special formulation designed.
- Super anti-wet property; Good abrasion resistance.

GT 126



Size	Ply Rating	Tread Depth (mm)	Speed Rating	Standard Rim	Load Index	Max. Load (kgs)		Inflation Pressure (kpa)	New Tyre Inflated Dimension (mm)	
						Single	Double		Overall Diameter	Section Width
						11R22.5	16		13	M
12R22.5	18	14.5	K	9.00	152/149	3550	3250	930	1084	300
295/80R22.5	18	16	L	9.00	152/149	3350	3250	830	1044	298
315/80R22.5	18	15	M	9.00	154/151	3750	3450	830	1075	314
315/80R22.5	20	15	M	9.00	156/150	4000	3350	850	1075	314



PATTERN CHARACTERISTICS



- Suitable for the expressway, muddy road
- Higher traction
- Cutting resistance
- Lower heating up

GT 167



Size	Ply Rating	Tread Depth (mm)	Speed Rating	Standard Rim	Load Index	Max. Load (kgs)		Inflation Pressure (kpa)	New Tyre Inflated Dimension (mm)	
						Single	Double		Overall Diameter	Section Width
						315/80R22.5	18		17	M
315/80R22.5	20	17	M	9.00	156/151	4000	3450	850	1076	312
13R22.5	18	15	L	9.75	154/151	3750	3450	830	1124	320
13R22.5	20	15	L	9.75	156/150	4000	3450	850	1124	320



PATTERN CHARACTERISTICS



- High speed, high loading capability
- Good traction, braking and ground grasping capability
- Suitable for driving

GT 298



Size	Ply Rating	Tread Depth (mm)	Speed Rating	Standard Rim	Load Index	Max. Load (kgs)		Inflation Pressure (kpa)	New Tyre Inflated Dimension (mm)	
						Single	Double		Overall Diameter	Section Width
						265/70R19.5 (D932)	16		15	M
11R22.5	16	19.5	M	8.25	146/143	3000	2725	830	1057	273
12R22.5	18	20	L	9.00	152/149	3550	3250	930	1084	300
295/80R22.5	18	20	L	9.00	152/149	3550	3250	850	1044	298
315/80R22.5	20	18	K	9.00	156/150	4000	3350	850	1083	312



PATTERN CHARACTERISTICS



- Designed for all kinds of difficult road condition and express road
- Excellent anti-irregular wear performance

GT 268



Size	Ply Rating	Tread Depth (mm)	Speed Rating	Standard Rim	Load Index	Max. Load (kgs)		Inflation Pressure (kpa)	New Tyre Inflated Dimension (mm)	
						Single	Double		Overall Diameter	Section Width
12R22.5	18	19.5	M	9.00	152/149	3550	3250	930	1090	292.1
295/80R22.5	18	19.5	M	9.00	152/149	3550	3250	900	1050	292
315/70R22.5	18	23	L	9.00	151/148	3550	3250	830	1014	312
315/70R22.5	20	23	L	9.00	157/153	3550	3250	870	1076	312
315/80R22.5	20	19.5	L	9.00	156/150	4000	3350	850	1076	312



PATTERN CHARACTERISTICS



- High speed and long run drive
- Wear and lopsided wear resistance
- Lower heat and fuel efficient
- Prevent sandwiching stone and comfortable

GT 128



Size	Ply Rating	Tread Depth (mm)	Speed Rating	Standard Rim	Load Index	Max. Load (kgs)		Inflation Pressure (kpa)	New Tyre Inflated Dimension (mm)	
						Single	Double		Overall Diameter	Section Width
8R22.5	14	13	M	6.00	130/128	1900	1800	830	935	203
9R22.5	14	13.5	M	6.75	136/134	2240	2120	830	974	229
10R22.5	16	14.5	M	7.50	144/142	2800	2650	900	1019	254
11R22.5	16	15	M	8.25	146/143	3000	2725	830	1054	279
11R24.5	16	15.5	M	8.25	149/146	3250	3000	830	1104	279
12R22.5	18	17	M	9.00	152/149	3550	3250	930	1085	300
295/80R22.5	18	15	M	9.00	152/149	3550	3250	900	1044	298
315/80R22.5	20	15	L	9.00	156/153	4000	3650	900	1076	312



PATTERN CHARACTERISTICS



- Designed for all kinds of difficult road condition and express road
- Excellent anti-irregular wear performance

GT 278



Size	Ply Rating	Tread Depth (mm)	Speed Rating	Standard Rim	Load Index	Max. Load (kgs)		Inflation Pressure (kpa)	New Tyre Inflated Dimension (mm)	
						Single	Double		Overall Diameter	Section Width
12.00R20	18	20	J	8.50	154/151	3750	3450	900	1122	313
12.00R20	20	20	J	8.50	156/153	4000	3650	900	1122	313
11R22.5	14	18	L	8.25	144/142	2800	2650	840	1050	302
11R22.5	16	18	L	8.25	146/143	3000	2725	840	1050	302
11R24.5	14	18	L	8.25	144/142	3000	2725	840	1104	302
11R24.5	16	18	L	8.25	146/143	3250	3000	840	1104	302
12R22.5	16	18	L	9.00	150/147	3350	3075	930	1084	300
12R22.5	18	18	L	9.00	152/149	3550	3250	930	1084	300
13R22.5	18	18.5	K	9.75	154/151	3750	3450	900	1124	326
13R22.5	20	18.5	K	9.75	156/153	4000	3650	900	1124	326
315/80R22.5	18	18.5	K	9.00	154/151	3750	3450	850	1076	312
315/80R22.5	20	18.5	K	9.00	156/150	4000	3650	850	1076	312



PATTERN CHARACTERISTICS



- Suitable for all kinds of roads
- Excellent traction
- Five broken-line pattern design
- Unique inner-liner compound design

GT 758



Size	Ply Rating	Tread Depth (mm)	Speed Rating	Standard Rim	Load Index	Max. Load (kgs)		Inflation Pressure (kpa)	New Tyre Inflated Dimension (mm)	
						Single	Double		Overall Diameter	Section Width
385/65R22.5	20	15	L	11.75	160/-	4500	-	900	1072	389
425/65R22.5	18	15.5	K	12.25	162/-	5000	-	830	1124	422
425/65R22.5	20	15.5	K	12.25	164/-	5000	-	830	1124	422



PATTERN CHARACTERISTICS



- Be suitable for middle and long distance vehicles on the good condition of paved and mixing road
- Excellent stability with high speed, good anti-friction ability and high loading capacity

GT 768



Size	Ply Rating	Tread Depth (mm)	Speed Rating	Standard Rim	Load Index	Max. Load (kgs)		Inflation Pressure (kpa)	New Tyre Inflated Dimension (mm)	
						Single	Double		Overall Diameter	Section Width
385/65R22.5	20	15	L	11.75	160/-	4500	-	900	1072	389
425/65R22.5	18	15.5	K	12.25	162/-	5000	-	830	1124	422
425/65R22.5	20	15.5	K	12.25	164/-	5000	-	830	1124	422



PATTERN CHARACTERISTICS



- Suitable for all normal roads
- Low heat, fuel-efficient
- Rib pattern

GT 169



Size	Ply Rating	Tread Depth (mm)	Speed Rating	Standard Rim	Load Index	Max. Load (kgs)		Inflation Pressure (kpa)	New Tyre Inflated Dimension (mm)	
						Single	Double		Overall Diameter	Section Width
7.50R16	16	13	L	6.00G	124/120	1600	1400	770	805	215
8.25R16	14	13	L	6.50H	126/122	1700	1500	770	855	235
8.25R16	16	15	L	6.50H	128/124	1800	1600	930	855	235
9.5R17.5	18	14.5	M	6.75	143/141	2725	2575	127PSI	974	229



PATTERN CHARACTERISTICS



- Suitable for all kinds of roads
- High loading capability
- High powered mixed pattern
- Good ground graping capability

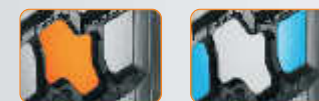
GT 580



Size	Ply Rating	Tread Depth (mm)	Speed Rating	Standard Rim	Load Index	Max. Load (kgs)		Inflation Pressure (kpa)	New Tyre Inflated Dimension (mm)	
						Single	Double		Overall Diameter	Section Width
12.00R24	20	15	K	8.50	160/157	4500	4125	900	1226	313
315/80R22.5	20	17	L	9.00	156/153	4000	3650	850	1075	310

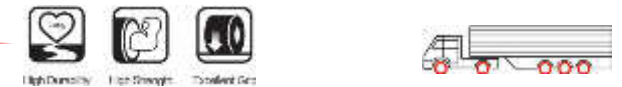


PATTERN CHARACTERISTICS



- Strong loading
- Mining use condition
- Anti-puncture & tear resistance
- Excellent driving & braking performance
- Lower speed and short run

GT 208



Size	Ply Rating	Tread Depth (mm)	Speed Rating	Standard Rim	Load Index	Max. Load (kgs)		Inflation Pressure (kpa)	New Tyre Inflated Dimension (mm)	
						Single	Double		Overall Diameter	Section Width
12.00R20	20	21.5	D	8.50	156/153	4000	3650	900	1128	310
13R22.5	18	20	F	9.75	154/150	3750	3350	850	1118	308

NEW



PATTERN CHARACTERISTICS



- Wide and thick block, extra deep
- Super mixed pattern design
- Super traction ability

GT 200



Size	Ply Rating	Tread Depth (mm)	Speed Rating	Standard Rim	Load Index	Max. Load (kgs)		Inflation Pressure (kpa)	New Tyre Inflated Dimension (mm)	
						Single	Double		Overall Diameter	Section Width
12.00R24	20	16	K	8.50	160/157	4500	4125	900	1226	313
315/80R22.5	20	16	M	9.00	156/151	4000	3450	850	1082	312

NEW



PATTERN CHARACTERISTICS



- Designed for all kinds of difficult road condition and express road
- Excellent anti-irregular wear performance

GT 238



Size	Ply Rating	Tread Depth (mm)	Speed Rating	Standard Rim	Load Index	Max. Load (kgs)		Inflation Pressure (kpa)	New Tyre Inflated Dimension (mm)	
						Single	Double		Overall Diameter	Section Width
11R22.5	16	-	M	8.25	146/143	3000	2725	830	1050	279
11R24.5	16	-	L	8.25	149/146	3250	3000	830	1104	279
285/75R24.5	16	-	L	8.25	144/141	2800	2575	110PSI	1050	283
295/75R22.5	16	-	L	9.00	144/141	2800	2575	760	1014	298



PATTERN CHARACTERISTICS



- Wide and thick block, extra deep tread depth, offer excellent traction.
- Designed with strong structure, good load
- Suitable to mine and mountain roads.

GT 718



Size	Ply Rating	Tread Depth (mm)	Speed Rating	Standard Rim	Load Index	Max. Load (kgs)		Inflation Pressure (kpa)	New Tyre Inflated Dimension (mm)	
						Single	Double		Overall Diameter	Section Width
10.00R20	18	21	G	7.5	149/146	3250	3000	900	1055	278
11.00R20	18	23	J	8.0	152/149	3550	3250	930	1082	286
12.00R20	20	23	J	8.5	156/153	4000	3650	830	1122	313



PATTERN CHARACTERISTICS



- Suitable for all kinds of roads
- Three zigzag patterns
- Excellent traction and wet skid-resistance.

GT 118



Size	Ply Rating	Tread Depth (mm)	Speed Rating	Standard Rim	Load Index	Max. Load (kgs)		Inflation Pressure (kpa)	New Tyre Inflated Dimension (mm)	
						Single	Double		Overall Diameter	Section Width
12.00R24	20	16	K	8.50	160/157	4500	4125	900	1226	313



PATTERN CHARACTERISTICS



- Suitable for normal and urban road.
- Deep pattern design for stronger power and durability.
- Special design for driving stability and high mileage.

GT218



Size	Ply Rating	Tread Depth (mm)	Speed Rating	Standard Rim	Load Index	Max. Load (kgs)		Inflation Pressure (kpa)	New Tyre Inflated Dimension (mm)	
						Single	Double		Overall Diameter	Section Width
11R22.5	14	20.5	L	8.25	144/142	2800	2650	720	1065	279
11R22.5	16	20.5	L	8.25	148/145	3150	2900	840	1065	279
11R24.5	14	20.5	L	8.25	146/143	3000	2725	720	1116	279
11R24.5	16	20.5	L	8.25	149/146	3250	3000	830	1116	279
12R22.5	16	20.5	L	9.00	152/148	3550	3150	840	1096	300
295/75R22.5	14	20.5	L	9.00	144/141	2800	2575	760	1020	298
295/75R22.5	16	20.5	L	9.00	146/143	3000	2725	830	1020	298
285/75R24.5	14	20.5	L	8.25	144/141	2800	2575	760	1056	283
285/75R24.5	16	20.5	L	8.25	147/144	3075	2800	830	1056	283
295/80R22.5	16	20.5	M	9.00	152/148	3550	3150	830	1055	298
315/80R22.5	18	20.5	M	9.00	154/151	3750	3450	830	1088	312
315/80R22.5	20	20.5	M	9.00	156/151	4000	3450	850	1088	312



NEW

PATTERN CHARACTERISTICS



- Rib Pattern, extra sideslip resistance, pitch pattern designed.
- Low Noise, special formulation designed.
- Super anti-wet property; Good abrasion resistance.

GT178



Size	Ply Rating	Tread Depth (mm)	Speed Rating	Standard Rim	Load Index	Max. Load (kgs)		Inflation Pressure (kpa)	New Tyre Inflated Dimension (mm)	
						Single	Double		Overall Diameter	Section Width
11R22.5	16PR	14.5	M	8.25	146/143	3000	2725	830	1054	279
11R24.5	16PR	14.5	M	8.25	149/146	3250	3000	830	1104	279
295/80R22.5	18PR	15.5	M	9.00	152/149	3550	3250	900	1044	298
295/75R22.5	16PR	14.5	M	9.00	146/143	3000	2725	830	1014	298
315/80R22.5	20PR	15.5	M	9.00	156/150	4000	3350	850	1075	314
315/70R22.5	18PR	15	M	9.00	152/148	3550	3150	850	1014	312
385/65R22.5	20PR	15.5	L	11.75	160	4500	-	900	1072	389
385/55R22.5	20PR	15.5	L	12.25	160	4500	-	900	996	386



PATTERN CHARACTERISTICS



- Suitable for highway, urban and country road.
- Strong bead structure to ensure longer endurance and lifespan.
- Horizontal groove design between ribs to prevent slippage.

GT266



Size	Ply Rating	Tread Depth (mm)	Speed Rating	Standard Rim	Load Index	Max. Load (kgs)		Inflation Pressure (kpa)	New Tyre Inflated Dimension (mm)	
						Single	Double		Overall Diameter	Section Width
11R22.5	16	22.5	M	8.25	146/143	3000	2725	830	1058	273
12R22.5	18	25	J	9.00	152/149	3550	3250	930	1084	300



PATTERN CHARACTERISTICS



- Suitable for highway, urban and country road.
- Strong bead structure to ensure longer endurance and lifespan.
- Horizontal groove design between ribs to prevent slippage.

GT138



Size	Ply Rating	Tread Depth (mm)	Speed Rating	Standard Rim	Load Index	Max. Load (kgs)		Inflation Pressure (kpa)	New Tyre Inflated Dimension (mm)	
						Single	Double		Overall Diameter	Section Width
215/75R17.5	16	12.5	M	6.00	126/124	1700	1600	700	767	211
215/75R17.5	18	12.5	J	6.00	135/133	2180	2060	850	767	211
235/75R17.5	16	12.5	M	6.75	132/130	2000	1900	775	797	233
235/75R17.5	18	12.5	J	6.75	143/141	2725	2575	875	797	233



PATTERN CHARACTERISTICS



• Four circumferential tread grooves design to bring the superior quiet effect, excellent water drainage, improving wet handling.

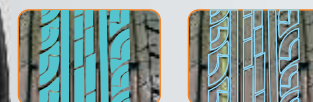


SUPER 200

Series	Size	Load Index	Speed Rating	Standard Rim	Section Width (mm)	Overall Diameter (mm)	Max Load (Kgs)	Max Pressure (Kpa)
55	185/55R14	80	H/V	6.0	194	560	450	300
	185/55R15	82	H/V	6.0	194	585	475	300
	205/55R16	91	H/V	6.5	214	632	615	300
60	185/60R14	82	H	5.5	189	578	475	300
	185/60R15	84	H	5.5	189	603	500	300
	195/60R14	86	H	6.0	201	590	530	300
	195/60R15	88	H	6.0	201	615	560	300
	205/60R15	91	H/V	6.0	209	627	615	300
	205/60R16	92	H/V	6.0	209	652	630	300
	215/60R16	95	H/V	6.5	221	664	690	300
	225/60R16	98	H	6.5	228	676	750	300
235/60R16	100	H	7.0	240	688	800	300	
65	155/65R13	73	T	4.5	157	532	365	300
	165/65R13	77	T	5.0	170	544	412	300
	175/65R14	82	H	5.0	177	584	475	300
	175/65R15	84	H	5.0	177	609	500	300
	185/65R14	86	H	5.5	189	596	530	300
	185/65R15	88	H	5.5	189	621	560	300
	195/65R15	91	H/V	6.0	201	635	615	300
	205/65R15	94	H/V	6.0	209	647	670	300
215/65R15	96	H	6.5	221	661	710	300	
215/65R16	98	H	6.5	221	686	750	300	
70	155/70R13	75	T	4.5	157	548	387	300
	165/70R13	79	T	5.0	170	562	437	300
	175/70R13	82	T	5.0	177	576	475	300
	175/70R14	84	T/H	5.0	177	602	500	300
	185/70R13	86	T	5.5	189	590	530	300
	185/70R14	88	T/H	5.5	189	616	560	300
	195/70R14	91	T/H	6.0	201	630	615	300
	205/70R14	95	T/H	6.0	209	644	690	300
	205/70R15	96	Y/H	6.0	209	669	710	300
215/70R15	98	Y/H	6.5	221	683	750	300	
225/70R15	100	T/H	6.5	228	697	800	300	
80	155/80R13	79	T	4.5	157	578	437	300
	165/80R13	83	T	4.5	165	594	487	300



PATTERN CHARACTERISTICS



• Four grooves with open shoulder for perfect water evacuation.
• Center rib design for better straight handling.
• Better handling during cornering and low noise emission.



SUPER T3

Series	Size	Load Index	Speed Rating	Standard Rim	Section Width (mm)	Overall Diameter (mm)	Max Load (Kgs)	Max Pressure (Kpa)
50	195/50R15	82	H/V	6J	201	577	475	300
55	185/55R15	82	V	6J	194	585	475	300
	195/55R15	85	V	6J	201	595	515	300
	205/55R16	91	H/V	61/2J	214	632	615	300
60	185/60R14	82	H	51/2J	189	578	475	300
	185/60R15	84	H	51/2J	189	603	500	300
	195/60R14	86	H	6J	201	590	530	300
	195/60R15	88	H/V	6J	201	615	560	300
	205/60R15	91	H/V	6J	209	627	615	300
	205/60R16	92	H/V	6J	209	652	630	300
	205/60R16	96 XL	V	6J	209	652	710	340
	215/60R16	95	H/V	61/2J	221	664	690	300
65	215/60R16	99 XL	V	61/2J	221	664	775	340
	225/60R16	98	H/V	61/2J	228	676	750	300
	185/65R14	86	T/H	51/2J	189	596	530	300
	185/65R15	88	T/H	51/2J	189	621	560	300
	195/65R15	91	H/V	6J	201	635	615	300
	205/65R15	94	H/V	6J	209	647	670	300
70	215/65R16	98	H/V	61/2J	221	686	750	300
	215/65R16	102 XL	H/V	61/2J	221	686	850	340
	195/70R14	91	T/H	6J	201	630	615	300
75	205/70R14	98 XL	H/V	6J	209	644	750	340
	P215/75R15	101	H/V	6J	216	703	825	300
80	P225/75R15	104	H/V	6J	223	719	900	300
	P225/75R15	106 XL	H/V	6J	223	719	950	340



PATTERN CHARACTERISTICS



- Suitable for various light-load goods vehicles.
- Excellent traction, braking, steering performance, good water dispersion and self-cleaning.



SUPER 600

Size	Load Index	Speed Rating	Standard Rim	Section Width (mm)	Overall Diameter (mm)	Max Load (Kgs)	Max Pressure (Kpa)
6.50R16LT	107/102	M	5.50F	185	750	975/850	560
7.00R16LT	109/107	M	5.50F	198	778	1025/980	450
7.00R16LT	113/111	M	5.50F	198	778	1130/1075	525
7.50R16LT	123/121	M	6.00G	210	802	1510/1440	700
6.00R13LT	93/89	P	4.50B	164	650	650/580	415
6.00R14LT	95/90	P	4 1/2J	158	626	690/600	415
6.00R15LT	97/92	P	4.50E	170	705	730/630	415



PATTERN CHARACTERISTICS



- Streamline pattern combine with lateral grooves provide excellent water dispersion and a quieter driving experience.



SUPER 100

Size	Load Index	Speed Rating	Standard Rim	Section Width (mm)	Overall Diameter (mm)	Max Load (Kgs)	Max Pressure (Kpa)
155R13C	85/83	N	4.50B	157	578	600	350
155R13C	90/88	N	4.50B	157	578	600	450
165R13C	91/89	N	4 1/2J	165	594	670	375
165R13C	94/93	N	4 1/2J	165	594	670	450
165/70R14LT	89/87	R	5J	170	588	580	375
175R13C	94/92	N	5.00B	177	610	670	375
175R13C	97/95	Q	5.00B	177	610	730	450



PATTERN CHARACTERISTICS



- Suitable for various light-load goods vehicles.
- Excellent traction, braking, steering performance, good water dispersion and self-cleaning.



POWER UHP

Series	Size	Load Index	Speed Rating	Standard Rim	Section Width (mm)	Overall Diameter (mm)	Max Load (Kgs)	Max Pressure (Kpa)
35S	215/35R18	84 XL	W	7.5	218	607	500	340
	235/35R19	91 XL	W/Y	8.5	241	647	615	340
	245/35R19	93 XL	W/Y	8.5	248	655	650	340
	225/35R20	90 XL	W/Y	8.0	230	666	600	340
	245/35R20	95 XL	W/Y	8.5	248	680	690	340
40S	205/40ZR17	84 XL	W/Y	7.5	212	596	500	340
	225/40ZR18	92 XL	W/Y	8.5	248	653	630	340
	235/40ZR18	95 XL	W	8.5	241	645	690	340
	245/40ZR18	97 XL	W	8.5	248	653	730	340
45S	205/45ZR16	87 XL	W	7.0	206	590	545	340
	205/45ZR17	88 XL	W	7.0	206	616	560	340
	215/45ZR17	91 XL	W	7.0	213	626	615	340
	225/45ZR17	94 XL	W	7.5	225	634	670	340
	225/45ZR18	95 XL	W	7.5	225	659	690	340
	235/45ZR17	97 XL	W	8.0	236	644	730	340
	245/45ZR18	100 XL	W	8.0	243	677	800	340
	275/45R20	110 XL	V/W	9.0	273	756	1060	340
50S	195/50R15	82	V	6.0	201	577	475	340
	205/50ZR16	91 XL	W	6.5	214	612	615	340
	205/50ZR17	93 XL	W	6.5	214	638	650	340
	215/50ZR17	95 XL	W	7.5	245	719	875	340
	225/50ZR17	98 XL	W	8.0	265	739	975	340
55S	195/55R15	85	V	6.0	201	595	515	300
	205/55ZR16	94 XL	W	6.5	214	632	670	340
	215/55ZR16	97 XL	W	7.0	226	642	730	340
	215/55ZR17	98 XL	W	7.0	226	668	750	340
	225/55ZR16	99 XL	W	7.0	233	654	775	340
	225/55ZR17	101 XL	W	7.0	233	680	825	340
	235/55ZR17	103 XL	W	7.5	245	690	875	340
	235/55ZR19	105 XL	W	7.5	245	741	925	340
	255/55R18	109 XL	V/W	8.0	265	737	1030	340
	275/55R20	117 XL	V	8.5	284	810	1285	340
60S	215/60R17	96	H	6.5	221	690	710	300
	235/60R16	100	H	7.0	240	688	800	300
65S	235/65R17	108 XL	H/V	7.0	240	738	1000	340
	245/65R17	107	H	7.0	248	750	975	300
	255/65R17	110	H	7.5	260	764	1060	300
	265/65R17	112	H	8.0	272	776	1120	300



PATTERN CHARACTERISTICS



• Particular tread compounds with big pattern blocks and proper sea/land ratio to ensure steady directional stability in all-surface traction and all-weather condition



POWER A/T

ALL-TERRAIN SUV

Series	Size	Load Index	Speed Rating	Standard Rim	Section Width (mm)	Overall Diameter (mm)	Max Load (Kgs)	Max Pressure (Kpa)
65S	P215/65R16	96	T	6.5	221	686	710	300
	P225/65R17	100	T	6.5	228	724	800	300
	P235/65R17	103	T	7	240	738	875	300
	P245/65R17	105	T	7	248	750	925	300
	P265/65R17	110	T	8	272	776	1060	300
70S	P215/70R16	99	T	6.5	221	708	775	300
	P225/70R16	101	T	6.5	228	722	825	300
	P235/70R16	104	T	7	240	736	900	300
	P245/70R16	106	T	7	248	750	950	300
	P245/70R17	108	S/T	7	248	776	1000	300
	P255/70R16	109	S/T	7.5	260	764	1030	300
	P265/70R16	111	S/T	8	272	778	1090	300
	P265/70R17	113	S/T	8	272	804	1150	300
	P275/70R16	114	S/T	8	279	792	1180	300
75S	P235/75R15	105	S/T	6.5	235	733	920	300
	P245/75R16	109	S/T	7	248	774	1030	300

SPORT TRUCK & SUV

Series	Size	Load Index	Speed Rating	Standard Rim	Section Width (mm)	Overall Diameter (mm)	Max Load (Kgs)	Max Pressure (Kpa)
70S	LT265/70R17	121/118	S	8.0	272	804	1450/1320	550
	LT225/75R16	115/112	S	6.0	223	744	1215/1120	550
	LT235/75R15	104/101	S	6.5	235	733	900/825	350
75S	LT245/75R16	120/116	S	7.0	248	774	1380/1260	550
	LT265/75R16	123/120	S	7.5	267	804	1550/1400	550
	245/75R15C	109/107	R/S	7.0	248	749	1030/1950	375
	185/75R16C	104/102	R/S	5.0	184	684	900/850	475
	LT285/75R16	122/119	S	8.0	286	834	1500/1360	450
85S	LT215/85R16	115/112	S	6.0	216	772	1215/1120	550
	LT235/85R16*	120/116	S	6.5	235	806	1380/1260	550
NA	215R15C	112/100	R/S	6.0	381	724	1120/1060	450
	31X10.50R15LT	109	S	8.5	268	775	1030	350



PATTERN CHARACTERISTICS



• A special winding method of applying the nylon overlays which constrain the belt package under the tread.



SUPER T1

Series	Size	Load Index	Speed Rating	Standard Rim	Section Width (mm)	Overall Diameter (mm)	Max Load (Kgs)	Max Pressure (Kpa)
60	175/60R13	77	T/H	5J	177	540	412	300
	155/65R13	73	T	4.50B	157	532	365	300
65	165/65R13	77	T	5.00B	170	544	412	300
	175/65R14	82	T/H	5J	177	584	475	300
	175/65R14	86 XL	T	5J	177	584	530	340
	155/70R13	75	T	4.50B	157	548	387	300
70	165/70R13	79	T	5.00B	170	562	437	300
	165/70R14	81	T	5J	170	588	462	300
	175/70R13	82	T/H	5.00B	177	576	475	300
	175/70R14	84	T/H	5J	177	602	500	300
	185/70R13	86	T	5.50B	189	590	530	300
	185/70R14	88	T/H	51/2J	189	616	560	300
80	155/80R13	79	T	4.50B	157	578	437	300
	165/80R13	83	T	4.50B	165	594	487	300
	155R12C	83/81	Q	4.50B	157	550	487	350



PATTERN CHARACTERISTICS



• Streamline pattern combine with lateral grooves provide excellent water dispersion and a quieter driving experience.



POWER T8

Size	Load Index	Ply Rating	Speed Rating	Standard Rim	Section Width (mm)	Overall Diameter (mm)	Max Load (Kgs)	Max Pressure (Kpa)
155R12C	83/81	6	Q	4.50B	184	684	487	350
155R12C	91/89	10	Q	4.50B	184	684	615	550



PATTERN CHARACTERISTICS



• Reasonable pattern area, perfect collocation of every grooves, white side wall rib shows extraordinary appearance.



POWER XL SWS

Series	Size	Load Index	Speed Rating	Standard Rim	Section Width (mm)	Overall Diameter (mm)	Max Load (Kgs)	Max Pressure (Kpa)
75 WSW	P185/75R14	89	S/T	5	184	634	585	300
	P195/75R14	92	S/T	5	196	648	635	300
	P205/75R14	95	S/T	5.5	203	664	695	300
	P205/75R15	97	S/T	5.5	203	689	725	300
	P215/75R15	100	S/T	6	216	703	790	300
	P225/75R15	102	S/T	6	223	719	850	300
P235/75R15	105	S/T	6.5	235	733	920	300	

WSW white sidewall



PATTERN CHARACTERISTICS



• Longitudinal zigzag grooves combine with sipes provide excellent grip ability, water dispersion and skid resistance.



POWER T9

Size	Load Index	Ply Rating	Speed Rating	Standard Rim	Section Width (mm)	Overall Diameter (mm)	Max Load (Kgs)	Max Pressure (Kpa)
500R12C	83/81	8	P	3.50B	143	565	485	450
500R12C	88/86	10	P	3.50B	143	565	560	550



PATTERN CHARACTERISTICS



• All-season and all position radial, wider footprint contribute to better wear resistance and wet traction.



POWER T5

Series	Size	Load Index	Ply Rating	Speed Rating	Standard Rim	Section Width (mm)	Overall Diameter (mm)	Max Load (Kgs)	Max Pressure (Kpa)
70	195/70R15C	104/102	D/8PR	R	6.0	201	655	900/850	450
	205/70R15C	106/104	D/8PR	R	6.0	209	669	950/900	450
	235/65R16C	115/113	D/8PR	R	7.0	240	712	1215/1150	475
75	195/75R16C	107/105	D/8PR	R	5.5	196	698	975/925	475
	205/75R14C	109/107	D/8PR	R	5.5	203	664	1030/975	475
	205/75R15C	109/107	D/8PR	R	5.5	203	689	1030/975	475
	205/75R16C	110/108	D/8PR	R	5.5	203	714	1060/1000	475
85	155R13C*	90/88	D/8PR	R	4.5	157	578	600/560	450
	185R14C	102/100	D/8PR	R	5.5	188	650	850/800	450
	185R15C	103/102	D/8PR	R	5.5	188	674	875/850	450
	195R14C	106/104	D/8PR	R	5.5	198	666	950/900	450
	195R15C	106/104	D/8PR	R	5.5	198	693	950/900	450



PATTERN CHARACTERISTICS



• Continuous tyre shoulder pattern block with special sipe suppress unnormal wear effectively, high mileage compound.



POWER MAX

Series	Size	Load Index	Ply Rating	Speed Rating	Standard Rim	Section Width (mm)	Overall Diameter (mm)	Load Capacity (Kg)	Max Pressure (Kpa)
65	195/65R16C	100/98	C / 6PR	R	6.0	201	660	800/750	375
	225/65R16C	112/110	D / 8PR	R	6.5	228	698	1120/1060	475
	235/65R16C	115/113	D / 8PR	R	7.0	240	712	1215/1150	475
70	195/70R15C	104/102	D / 8PR	R	6.0	201	655	900/850	450
	205/70R15C	106/104	D / 8PR	R	6.0	209	669	950/900	450
	215/70R15C	109/107	D / 8PR	R	6.5	221	683	1030/975	450
75	185/75R16C	104/102	D / 8PR	R	5.0	184	684	900/850	475
	195/75R16C	107/105	D / 8PR	R	5.5	196	698	975/925	475
	205/75R16C	110/108	D / 8PR	R	5.5	203	714	1060/1000	475
	215/75R16C	113/111	D / 8PR	R	6.0	216	728	1150/1090	475
	185R14C	102/100	D / 8PR	R	5.5	188	650	850/800	450
	185R15C	103/102	D / 8PR	R	5.5	188	674	875/850	450
	195R14C	106/104	D / 8PR	R	5.5	198	666	950/900	450
	195R15C	106/104	D / 8PR	R	5.5	198	693	950/900	450



• Perfect location of main grooves and lateral grooves, take the good balance with driving stability and traction performance.



POWER T6

Size	Load Index	Ply Rating	Speed Rating	Standard Rim	Section Width (mm)	Overall Diameter (mm)	Max Load (Kgs)	Max Pressure (Kpa)
195R15C	106/104	8	Q	5 ½ J	196	693	950	450



PATTERN CHARACTERISTICS



• Special compound design for long mileage. Superior driving performance and strong grip. Better water drainage and wet traction.



SUPER T2

Series	Size	Load Index	Speed Rating	Standard Rim	Section Width (mm)	Overall Diameter (mm)	Max Load (Kgs)	Max Pressure (Kpa)
65	195/65R16C	104/102	R	6J	201	660	900/850	475
	195/65R16C	100/98	R	6J	201	660	800/750	375
	205/65R16C	107/105	R	6J	209	672	975/925	475
	215/65R16C	109/107	R	61/2J	221	686	1030/975	475
	225/65R16C	112/110	R	61/2J	228	698	1120/1060	475
	235/65R16C	115/113	R	7J	240	712	1215/1150	475
70	195/70R15C	104/102	R	6J	201	655	900/850	450
	205/70R15C	106/104	R	6J	209	669	950/900	450
	215/70R16LT	104/102	N	61/2J	221	708	900/850	450
	215/70R16LT	100/97	N	61/2J	221	708	800/730	350
	225/70R15C	112/110	R	61/2J	228	697	1120/1060	450
75	185/75R16C	104/102	R	5J	184	684	900/850	475
	195/75R16C	107/105	R	51/2J	196	698	975/925	475
	215/75R15LT	100/97	N	6J	216	703	800/730	350
	215/75R16C	116/114	R	6J	216	728	1250/1180	525
	215/75R16C	113/111	R	6J	216	728	1150/1090	475
	185R14C	102/100	Q	51/2J	188	650	850/800	450
	195R14C	106/104	Q	51/2J	198	666	950/900	450
	195R15C	106/104	Q	51/2J	198	690	950/900	450



PATTERN CHARACTERISTICS



- Excellent skid resistance and low rolling resistance.
- Good wet traction and superior water evacuation.
- Special pattern design for driving power on various roads.

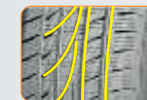


SUPER A/T

Series	Size	Load Index	Speed Rating	Standard Rim	Section Width (mm)	Overall Diameter (mm)	Max Load (Kgs)	Max Pressure (Kpa)
35	245/35ZR20	95 XL	W/Y	81/2J	248	680	690	340
	255/35ZR20	97 XL	W/Y	9J	260	686	730	340
50	255/50ZR19	107 XL	W/Y	8J	265	739	975	340
	285/50R20	116 XL	W	9J	297	794	1250	340
55	235/55R17	99	H	71/2J	245	690	775	300
	235/55ZR18	104 XL	W	71/2J	245	715	900	340
	245/55ZR19	103	W	71/2J	253	753	875	300
	255/55ZR18	109 XL	W	8J	265	737	1030	340
	255/55ZR19	111XL	W	8J	265	763	1090	340
	275/55R17	109	V	81/2J	284	734	1030	300
	235/60R16	100	H	7J	240	688	800	300
60	235/60R17	102	H	7J	240	714	850	300
	235/60R18	107XL	V	7J	240	739	975	340
	255/60R17	106	H	71/2J	260	738	950	300
	255/60R18	112 XL	V	71/2J	260	763	1120	340
	275/60R17	110	H	8J	279	762	1060	300
	285/60R18	116	H	81/2J	292	799	1250	300
65	215/65R16	98	H	61/2J	221	686	750	300
	225/65R17	102	V	61/2J	228	724	850	300
	235/65R16	103	H	7J	240	712	875	300
	235/65R17	104	V	7J	240	738	900	300
	245/65R17	107	H	7J	248	750	975	300
	255/65R17	110	H	71/2J	260	764	1060	300
	265/65R17	112	H	8J	272	776	1120	300
70	285/65R17	116	H	81/2J	292	802	1250	300
	205/70R15	96	H	6J	209	669	710	300
	225/70R17	108 XL	T	61/2J	228	748	1000	340
	245/70R16	111XL	T	7J	248	750	1090	340
	245/70R17	110	T	7J	248	776	1060	300
	255/70R15	108	H	71/2J	260	739	1000	300
	255/70R16	111	T	71/2J	260	764	1090	300
	265/70R16	112	T	8J	272	778	1120	300
265/70R17	115	T	8J	272	804	1215	300	
275/70R16	114	T	8J	279	792	1180	300	



PATTERN CHARACTERISTICS



- Beautiful leaf form and streamline directional pattern shape, throw the snow wich in grooves high efficiency.



WINTER 120

Series	Size	Load Index	Speed Rating	Standard Rim	Section Width (mm)	Overall Diameter (mm)	Max Load (Kgs)	Max Pressure (Kpa)
55	185/55R14	80	T/H	6	194	560	450	300
	185/55R15	82	T/H	6	194	585	475	300
	195/55R15	85	T/H	6	201	595	515	300
	195/55R16	87	T/H	6	201	620	545	300
	205/55R16	91	T/H	6.5	214	632	615	300
	215/55R16	93	T/H	7	226	642	650	300
60	195/60R14	86	T/H	6	201	590	530	300
	195/60R15	88	T/H	6	201	615	560	300
	205/60R15	91	T/H	6	209	627	615	300
	205/60R16	92	T/H	6	209	652	630	300
	215/60R15	94	T/H	6.5	221	639	670	300
	215/60R16	95	T/H	6.5	221	664	690	300
	225/60R16	98	T/H	6.5	228	676	750	300
235/60R16	100	T/H	7	240	688	800	300	
65	175/65R14	82	T/H	5	177	584	475	300
	185/65R14	86	T/H	5.5	189	596	530	300
	195/65R15	91	T/H	6.0	201	635	615	300
	205/65R15	94	T/H	6	209	627	670	300
	215/65R15	96	T/H	6.5	221	662	710	300



R1
AGRICULTURAL TYRE



- The traction type tyre endows a good drive and hold power.
- The reasonable pattern tilt angle guarantees a good self-clean capacity.

Size	Ply Rating	Tube Tyre	Standard Rim	New Tyre Inflated Dimension(mm)		Max Load (kgs)	Inflation Pressure (kpa)
				Overall Diameter	Section Width		
4.00-10	4	TT	3.00D	485	112	185	240
5.00-12	6	TT	4.00E	590	145	280	200
5.50-17	6	TT	4.00E	750	140	780	520
6.00-12	6	TT	4.50E	640	165	405	250
6.00-16	6	TT	4.50E	745	165	495	250
6.50-16	6	TT	5.00F	765	180	565	250
7.50-16	6	TT	5.50F	810	205	650	210
7.50-20	6	TT	5.50F	910	205	760	210
8.30-20	6	TT	W7	895	210	695	240
8.30-24	6	TT	W7	995	210	810	240
9.5-24	8	TT	W8	1050	240	1110	280
11.2-24	8	TT	W10	1105	285	1225	240
11.2-28	8	TT	W10	1205	285	1305	240
12-38	8	TT	DW11	1575	330	1570	140
12.4-24	8	TT	W11	1160	315	1415	230
12.4-28	8	TT	W11	1260	315	1510	230
13.6-24	8	TT	W12	1210	345	1545	210
13.6-28	10	TT	W12	1310	345	1910	250
13.6-38	10	TT	W12	1565	345	2215	250
14.9-28	8	TT	W13	1365	378	1880	180
14.9-30	8	TT	W13	1415	378	1940	180
15.5-38	10	TT	W14L	1570	395	2320	230
16.9-28	8	TT	W15L	1435	430	2175	170
16.9-30	8	TT	W15L	1485	430	2245	170
16.9-34	8	TT	W15L	1585	430	2380	170
18.4-26	12	TT	DW16	1450	467	2985	230
18.4-30	8	TT	W16L	1550	467	2415	140
18.4-34	8	TT	W16L	1655	467	2565	140
18.4-38	10	TT	W16L	1755	467	3165	180
20.8-38	10	TT	W18L	1835	528	3475	160

more sizes available...



L-3/E-3
BIAS OTR TYRE

- Suitable to heavy dump trucks, scrapers and loaders,
- The combination of special tread design, stock compound and strong carcass structure design.

Size	Ply Rating	Tube Tyre	Standard Rim	New Tyre Inflated Dimension(mm)		Max Load (kgs)	Inflation Pressure (kpa)
				Overall Diameter	Section Width		
15.5-25	12/16	TT/TL	12.00	1275	395	5600/6150	400/475
17.5-25	16/20	TT/TL	14.00	1350	445	7300/8250	475/575
20.5-25	16/20	TT/TL	17.00	1490	520	8250/9500	350/450
23.5-25	20/24	TT/TL	19.50	1615	595	10900/12500	375/475
26.5-25	24/28	TT/TL	22.00	1750	675	14000/15500	400/475
29.5-25	28	TL	25.00	1875	750	17500	425
14.00-24	20/24	TT/TL	10.00	1370	375	4625/5150	475/575
16.00-24	20/24	TT/TL	11.25	1490	430	5450/6000	400/475
13.00-25	28	TT	10.00	1300	350	5570	740
16.00-25	28/32	TT/TL	11.25	1490	430	11500/12500	750/875
18.00-25	32/36	TT/TL	13.00	1615	495	15000/16000	750/850
16/70-20	16/18	TT	13.00	1075	410	2810/3350	350/450



EV4
BIAS OTR TYRE

- Suitable to heavy dump trucks, scrapers and loaders,
- The combination of special tread design, stock compound and strong carcass structure design.

Size	Ply Rating	Tube Tyre	Standard Rim	New Tyre Inflated Dimension(mm)		Max Load (kgs)	Inflation Pressure (kpa)
				Overall Diameter	Section Width		
17.5-25	12	TT/TL	14.00/1.5	1350	445	6150	350
17.5-25	14	TT/TL	14.00/1.5	1350	445	6650	405
17.5-25	16	TT/TL	14.00/1.5	1350	445	7300	475
17.5-25	20	TT/TL	14.00/1.5	1350	445	8250	575
23.5-25	16	TT/TL	19.00/2.5	1615	595	9500	300
23.5-25	20	TT/TL	19.00/2.5	1615	595	10900	375
23.5-25	24	TT/TL	19.00/2.5	1615	595	12500	475



L-2 INDUSTRIAL TYRE

- Suitable to heavy dump trucks, scrapers and loaders.
- The combination of special tread design, stock compound and strong carcass structure design.

Size	Ply Rating	Tube Tyre	Standard Rim	New Tyre Inflated Dimension(mm)		Max Load (kgs)	Inflation Pressure (kpa)
				Overall Diameter	Section Width		
12.5/70-16TL	6	TL	10.00	848	316	1410	200
15.5/80-18TL	8	TL	13.00	937	404	2195	220
13.00-24TL	16	TL	9.00DC	1300	350	3200	400
13.00-24TL	12	TL	9.00DC	1300	350	2725	300
14.00-24TL	18	TL	9.00DC	1370	375	3800	450
14.00-24TL	16	TL	9.00DC	1370	375	3650	350
14.00-24TL	12	TL	9.00DC	1370	375	3075	250
15.5-25TL	12	TL	12.00/1.3	1275	395	2650	250
17.5-25TL	12	TL	14.00/1.5	1350	445	2900	200
17.5-25TL	16	TL	14.00/1.5	1350	445	3350	275
20.5-25TL	16	TL	17.00/2.0	1490	520	4000	225
23.5-25TT	16	TT	19.00/2.5	1615	595	4750	200
23.5-25TL	16	TL	19.00/2.5	1615	595	4750	200



PLT 328 INDUSTRIAL TYRE

- Suitable to scrapers and forklifts operating in areas such as port, factory and warehouse sites.
- Good cutting and wear resistances.

Size	Ply Rating	Tube Tyre	Standard Rim	New Tyre Inflated Dimension(mm)		Max Load (kgs)	Inflation Pressure (kpa)
				Overall Diameter	Section Width		
5.00-8	10	TT	3.50	469	131	1090	1000
6.00-9	10	TT	4.00	545	160	1515	860
6.50-10	10	TT	5.00	597	178	1725	790
7.00-12	12	TT	5.00	683	192	2445	860
8.25-15	14	TT	6.50	847	236	3830	830
21X8-9	16	TT	6.00	533	203	2120	1000
28X9-15	12	TT	7.00	700	230	3035	700

more sizes available...

1. Air pressure

Tyres should be inflated according to current national standards stipulated in the form of air pressure & loading index. After inflation tyre should be checked carefully for leak or not. If leak found shall be repaired in time. Tyres in use must be ensured of normal internal air pressure. When long-running or driving, tyre pressure should be regularly checked. Long-stay parking, front and rear axes must be set up. High pressure causes crown grinding, top bursting; low pressure makes tyre deformation and damage. Twin tyres fitted must be assured of consistent inflation pressure, do not fit one by a higher pressure and another by lower air pressure.

2. Loading

Tyre loads must comply with current national standards. Do not overloading. Loading goods in vehicles should be distributed evenly to avoid uneven load. Overloading can cause serious abnormal tyre tread wear, shoulder separation, delaminating, toe blasting etc. High ply level and high tyres load index not suitable high-speed driving. Enhanced design tyres can loaded more properly according to standards of design.

3. Speed

Different limits of speed levels with all kinds of tyres, speeding may cause early tyre damage. Do not speeding ,minimize urgent braking and sharp turns in bad road ,avoiding of the tyre's hitting other objects, especially sharp objects. High speed tyres will be heated up easily, once its temperature is too high , measures should be taken timely (e.g.stopping for natural cooling)/to prevent the carcass bursting. High-speed tyres assembled with rims must be tested for balancing weight and calibration.

4. Storage

Tyres should be stored in the warehouse avoiding the sunning and raining. Tyre must be in storage away from heat, ozone, and generator. Tyres must *not* be in storage together with oil, flammable and corrosive chemical materials. Tyres shall be in storage upright, do not keep it horizontally, piling up one on top of hanging it by center hole. Tyre should be used firstly in order of first out from production or storage.

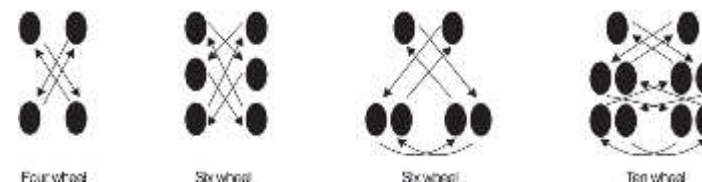
5. Shipping

When handling tyre by forklift, do it from side tyres, do not lift it with fork into the center hole of bead. Do not hang or raise tyres by rope, hook or fork directly, do it with wide textile fiber belt. Sets of tyres shall be wrapped or packed by rope or packing tape for avoiding damage of falling. Loading goods must be properly distributed into vehicles.

6. Assembly

Tyres must be fitted to the proper models of vehicles and the wheel, installation and removal of tyres with specialized tools and equipments, any violent prying and hitting prohibited. Tyres on the same axle must be the same structure, size, pattern and ply. Never install bias tyres and radial tyres together. Directions of tyres funning must be kept consistent to the vehicle when assembly directional tyres. Keep chains equipped in tyres symmetrical. If not uninstall it immediately.

GUIDE LINE FOR TYRES POSITION CHANGES



7. Pattern

Longitudinal tread pattern with less rolling resistance and fast speed, suit for cement, asphalt and other solid road surface. Cross groove with excellent grasping and climbing performance, adapt to ordinary road situation in China. Combined rib-lug patterns characteristics for asphalt , concrete , snow and mud road conditions. Cross-country road pattern adapt to where no road or bad road condition. Tyres must be rejected when tread wear to abrasion mark.